



a Non-transgenic plant in a Magenta box. Source of explants for co-cultivation.



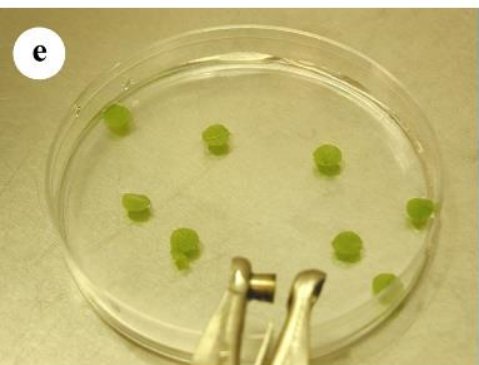
b Excising a leaf from an *in vitro*-grown plant. Done in a laminar flow hood.



c Punching leaf discs. Done with sterile implements in a laminar flow hood.



d Overnight (stationary-phase) culture of *Agrobacterium tumefaciens*.



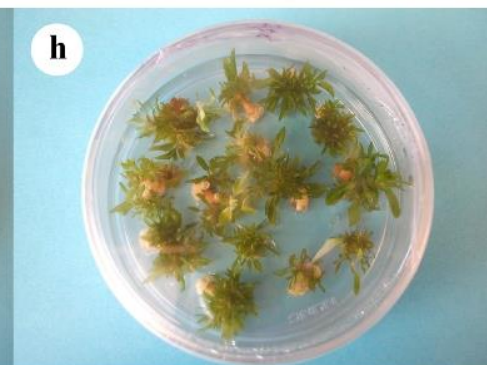
e Leaf discs floated on *Agrobacterium tumefaciens* suspension.



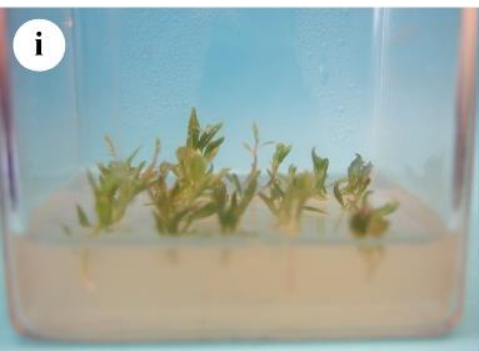
f Leaf discs aligned on callus-induction media (CIM) after co-cultivation. Photo taken 2 days after plating. Note bacterial growth (white) on margins of discs.



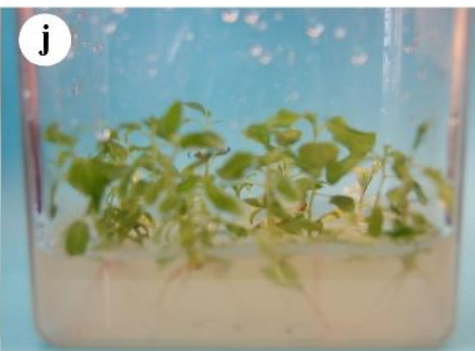
g Callus production on leaf disc explants. Green sectors represent cells that survived exposure to the selection agent.



h Shoots induced on leaf disc explants. Done in the presence of a selection agent.



i Excised shoots inserted into root-induction media (RIM).



j Roots beginning to form on excised shoots. Done in the presence of a selection agent.



k Extensive root production on excised shoots.



l Fully regenerated transgenic plants growing in a Magenta box.